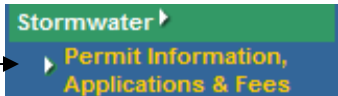


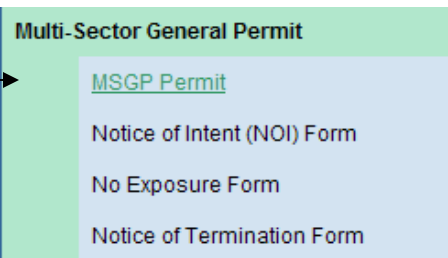
Where can I find more Information?

Stormwater Program website:

<http://www.vtwaterquality.org/stormwater.htm>

Click →  Stormwater ▾
▶ Permit Information, Applications & Fees

next

Click →  Multi-Sector General Permit
MSGP Permit
Notice of Intent (NOI) Form
No Exposure Form
Notice of Termination Form

The following helpful resources can be found on the website:

- A 'Fill-in-able' SWPPP & Instruction Booklet
- Best Management Practice (BMP) factsheets
- A Guide to Stormwater Sampling
- The Multi-Sector General Permit
- Application forms, Discharge Monitoring Report forms

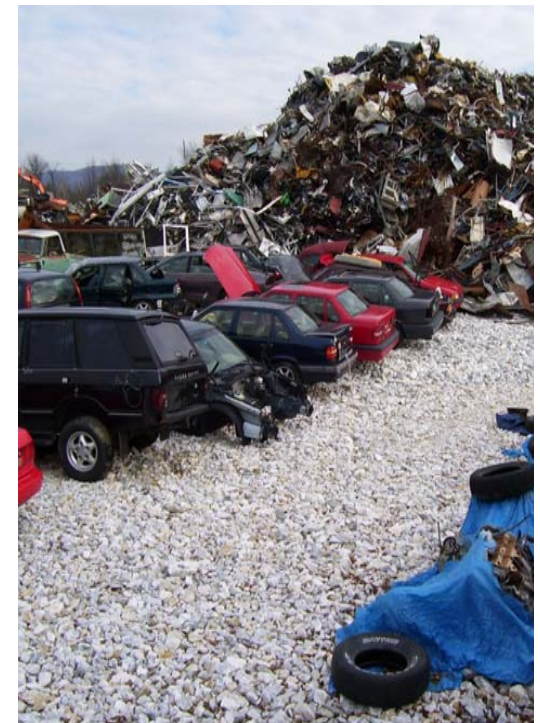
Or call (802) 241-3770

Permit review staff can provide assistance in determining receiving waters, water quality standards, & endangered species status

Vermont DEC
Water Quality Division
Stormwater Management Section
103 South Main Street
Building 10 North
Waterbury, VT 05671-0408

(802) 241-3770

Multi-Sector General Permit (MSGP) requirements for Auto Salvage Yards



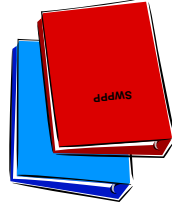
How do I apply?

1. Develop and implement your SWPPP
2. Complete an MSGP Notice of Intent (NOI) application form
3. Submit the NOI & SWPPP, along with \$150 to the VT DEC Stormwater Program
4. Post a copy of the NOI at the Town Clerk's office for Public Comment for 10 days

Following the receipt of a complete application, the application will be placed on public notice on the DEC website for 10 days. If no comments are received, the Secretary will authorize coverage under the MSGP and send the facility a written authorization. The Secretary may also deny eligibility, require an individual permit, or request additional information.

What does the MSGP require?

- A **Stormwater Pollution Prevention Plan (SWPPP)** must be developed and implemented at the site. The SWPPP must include facility specific information regarding potential pollutant sources as well as Best Management Practices (BMPs) to prevent stormwater pollution.



The Stormwater Program has prepared a "fill-in-able" SWPPP that can be tailored for your facility to assist with this requirement.

BMPs include good housekeeping practices, preventative maintenance, spill prevention, minimizing exposure, facility inspections & employee training.

- Monitoring of stormwater discharges from the facility to ensure that the facility's BMPs are working. **Discharge Monitoring Reports (DMRs)** must be submitted quarterly for the first year of permit coverage.

Auto salvage yards must sample for Total Suspended Solids (TSS), Aluminum, Iron and Lead



What is the MSGP?

The Multi-Sector General Permit (MSGP) is a Federally mandated permit that covers new and existing discharges of stormwater associated with certain types of industrial activity. This general permit protects water quality by requiring that certain regulated industrial activities be conducted in a manner that prevents and minimizes contamination of stormwater runoff.

Permit coverage is required for industries identified on the MSGP Standard Industrial Classification (SIC) code list (Table D-1 of the permit). Auto salvage yards are classified in this list under Sector M, SIC code 5015 and must apply for the MSGP.

