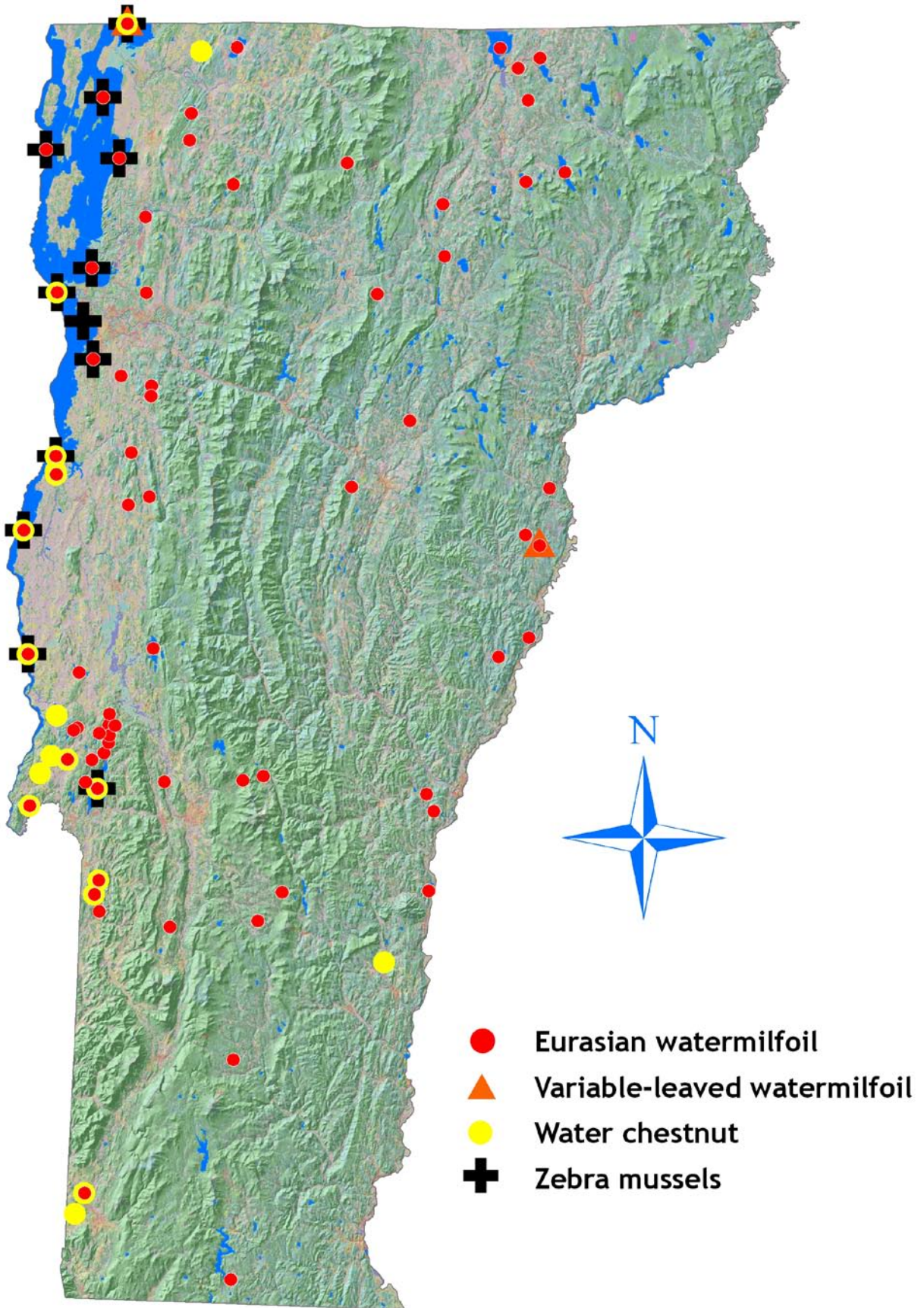


Vermont Documented Invasive Species Infestations in Lakes and Ponds:
Eurasian watermilfoil, Variable-leaved watermilfoil, Water chestnut, Zebra mussels



Vermont Documented Invasive Species Infestations in Lakes and Ponds

Eurasian watermilfoil, Variable-leaved watermilfoil, Water chestnut, Zebra mussels

Eurasian watermilfoil – Lakes/Ponds – Confirmed Locations (Total = 63)*

Lake/Pond	Location	Year Found	Lake/Pond	Location	Year Found
Arrowhead Mountain	<i>Milton</i>	1988	Hortonia	<i>Hubbardton</i>	1984
Austin	<i>Hubbardton</i>	1992	Hough	<i>Sudbury</i>	2007
Beaver	<i>Mendon</i>	2004	Indian Brook	<i>Essex</i>	1999
Beaver	<i>Proctor</i>	2000	Iroquois	<i>Hinesburg</i>	1990
Beebe	<i>Hubbardton</i>	1991	Kent	<i>Killington</i>	1995
Berlin	<i>Berlin</i>	1986	Lily	<i>Poultney</i>	1983
Black	<i>Hubbardton</i>	1987	Little	<i>Wells</i>	1983
Bomoseen	<i>Castleton</i>	1982	Long	<i>Eden</i>	1998
Brownington	<i>Brownington</i>	1986	Lower	<i>Hinesburg</i>	1987
Burr	<i>Sudbury</i>	1991	Memphremagog	<i>Newport Town</i>	198-
Carmi	<i>Franklin</i>	197-	Metcalf	<i>Fletcher</i>	1984
Cedar	<i>Monkton</i>	1990	Mill (Parsons)	<i>Benson</i>	1989
Champlain	<i>Burlington</i>	1962	Mill	<i>Windsor</i>	1987
Chipman	<i>Tinmouth</i>	1998	Morey	<i>Fairlee</i>	1991
Clyde	<i>Derby</i>	2000	Ninevah	<i>Mount Holly</i>	2010
Coggman	<i>West Haven</i>	1998	North Hartland	<i>Hartland</i>	2007
Crystal	<i>Barton</i>	2001	North Montpelier	<i>East Montpelier</i>	1982
Derby	<i>Derby</i>	2000	Paran	<i>Bennington</i>	197-
Deweys Mill	<i>Hartford</i>	2002	Porter	<i>Ferrisburgh</i>	2003
Dunmore	<i>Salisbury</i>	1989	Richville	<i>Shoreham</i>	1988
Echo	<i>Hubbardton</i>	1989	Round	<i>Newbury</i>	1990
Elligo	<i>Greensboro</i>	1997	Sadawga	<i>Whitingham</i>	2006
Elmore	<i>Elmore</i>	2002	Shelburne	<i>Shelburne</i>	1992
Fairfield	<i>Fairfield</i>	1993	St. Catherine	<i>Wells</i>	1999
Fairfield Swamp	<i>Swanton</i>	2008	Star	<i>Mount Holly</i>	1997
Fairlee	<i>Thetford</i>	1995	Sunrise	<i>Benson</i>	1987
Fern	<i>Leicester</i>	1996	Sunset	<i>Benson</i>	1990
Gale Meadows	<i>Londonderry</i>	2005	Ticklenaked	<i>Ryegate</i>	2010
Glen	<i>Castleton</i>	1983	Vergennes Watershed	<i>Bristol</i>	1985
Great Hosmer	<i>Craftsbury</i>	2001	Willoughby	<i>Westmore</i>	1999
Halls	<i>Newbury</i>	1991	Winona	<i>Bristol</i>	1986
Hinkum	<i>Sudbury</i>	2006			

*Eurasian watermilfoil has been previously documented in Loves Marsh, Rescue and Seymour. As of September 2009 these populations are considered *controlled*, which is believed to be a result of rapid response, aggressive control programs and/or access area greeter programs.

Variable-leaved watermilfoil – Confirmed Locations (Total = 2)

- Halls Lake, Newbury, 2008
- Missisquoi Bay, Lake Champlain, Highgate, 2009

Water chestnut – Lakes/Ponds and Marshes – Confirmed Locations (Total = 13 plus 68 Lake Champlain and tributary sites)

- Big Marsh Slough, Highgate, 2006
- Bomoseen, Castleton, 1997, *controlled*
- Brookside, Orwell, 2004
- Bullis, Franklin, 2007
- Coggman, Benson, 1998
- Champlain: 68 lake or associated tributary sites between Ferrisburgh, VT and Benson, VT on both the New York and Vermont sides of the lake; Missisquoi Bay; Pike River. Water Chestnut has been present in Lake Champlain since the 1960's
- Cranberry Pool, Highgate, 2006
- Lily, Poultney, 2006
- North Springfield, Springfield, 2003
- Mill (Parsons), Benson, 199-
- Paran, Bennington, 1998
- Pelkeys, Benson, 199-
- Porter, Ferrisburgh, 2003
- Richville, Orwell, 2007
- Root, Benson, 199-

79% of Vermont's lakes (greater than 20 acres) are NOT infested with Eurasian watermilfoil!

Zebra mussels – Confirmed Locations (Total = 2)

- Champlain, 1993
- Bomoseen, Castleton, 1999